

## Draft Intella iBase Deployment Instructions

Copy the Template File (Intella version 1.idt) to the following Directory:

*On Windows XP*

C:\Documents and Settings\<<User name>\My Documents\i2\i2 iBase 8\Templates

*On Windows 7*

C:\Users\<User Name>\Documents\i2\i2 iBase 8\Templates

Edit the IconList.txt file located in:

*On Windows XP*

C:\Documents and Settings\All Users\Application Data\i2\i2 iBase 8\en-GB\Configuration

*On Windows 7*

C:\ProgramData\i2\i2 iBase 8\en-GB\Configuration

Copy the text from the "Edits to IconList.txt" file and Paste to the end of the "IconList.txt" file.

Copy the .PNG files supplied to the following location:

*On Windows XP*

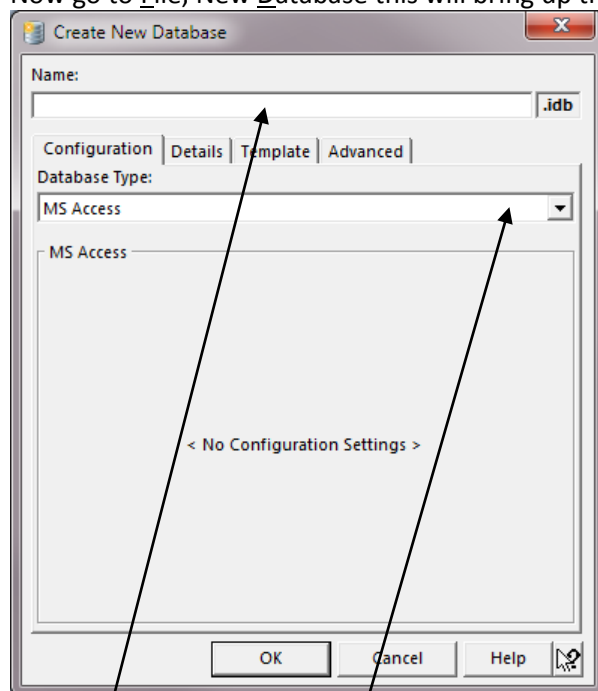
C:\Program Files\Common Files\i2 Shared\Images 8.5\Basic\Icons

*On Windows 7*

C:\Program Files (x86)\Common Files\i2 Shared\Images 8.5\Basic\Icons

Open iBase Designer, from the File menu select New Security File I suggest you call it Intella, this will create a new .ids file with a single user SYSADMIN with a Password of SYSADMIN, close the next dialog that opens (allowing the addition of additional users).

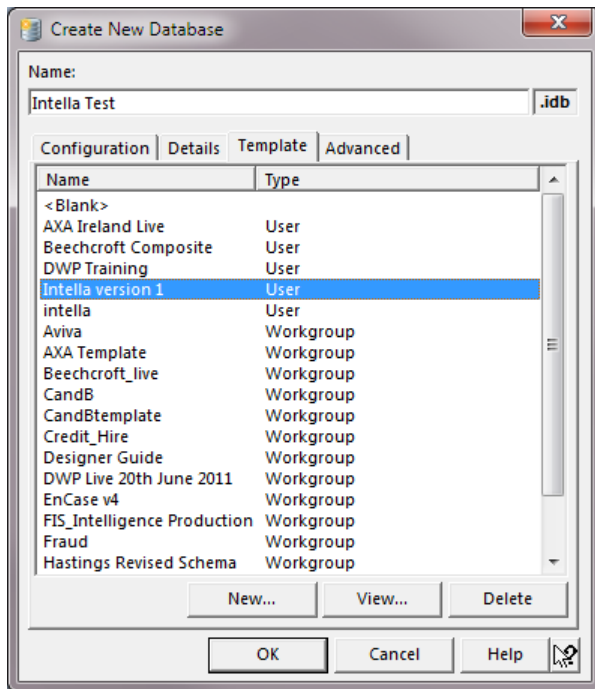
Now go to File, New Database this will bring up the following Dialog:



Give the database a name.

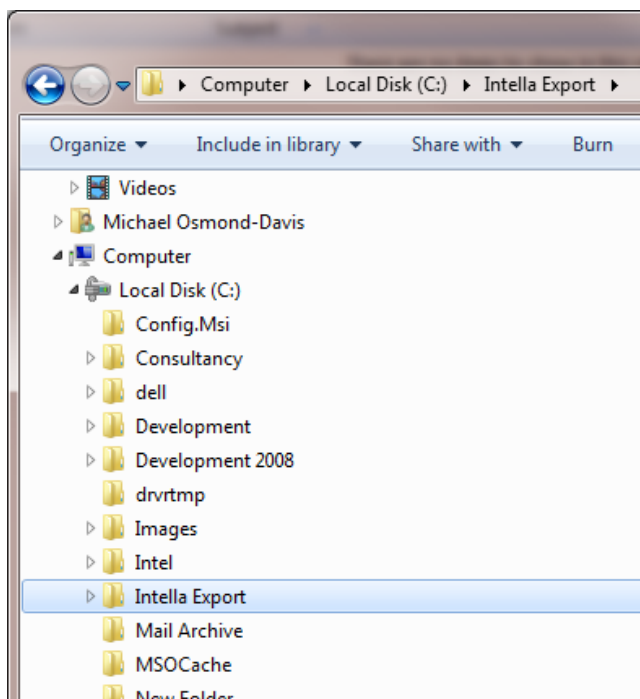
Select MS Access for a local DB or Select SQL Server and fill in the connection information.

Click the Template Tab

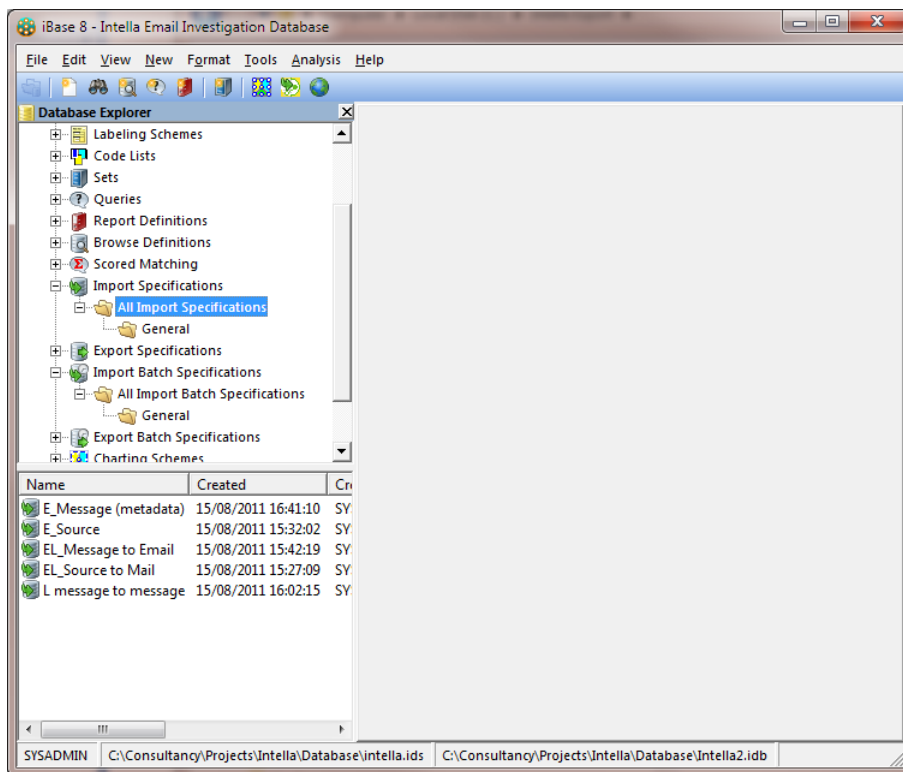


Select the Intella version 1 template you copied earlier, and then click OK – your database will be created.

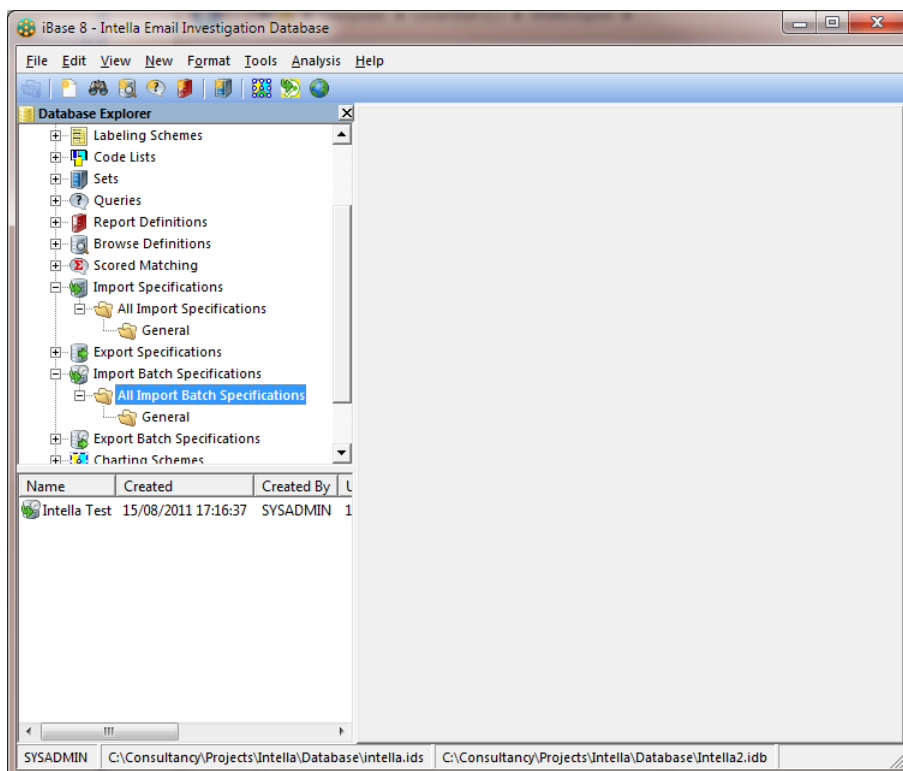
Create a folder called Intella Export on your C: drive to store the Intella data



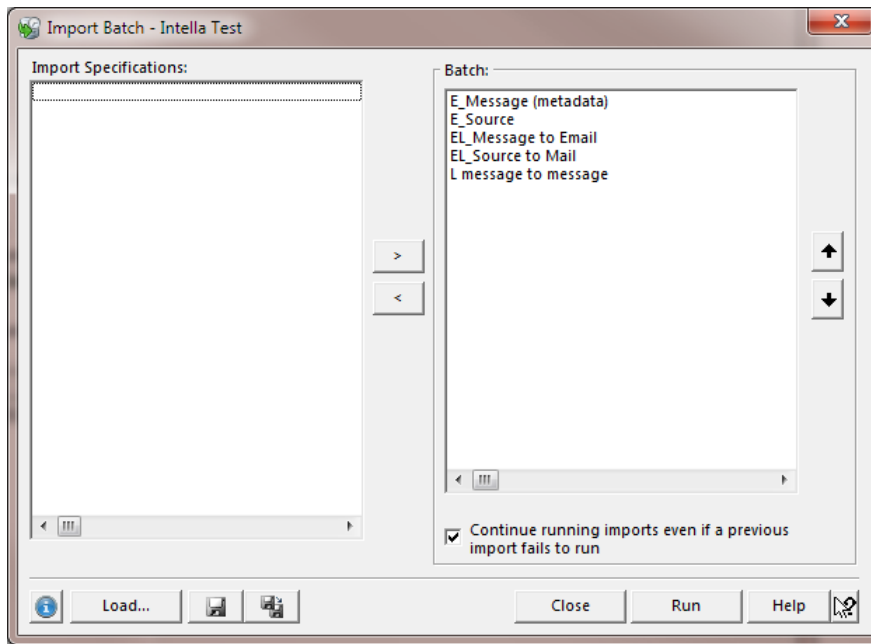
Within the iBase Database you will find some pre-built import specifications:



And an Import Batch specification:



Double click this Import Batch and the following dialog will appear:



Click Run and the data previously exported from Intella will be imported into the iBase database.